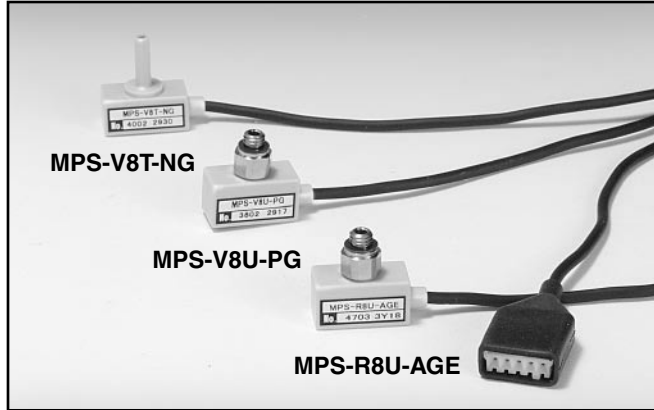
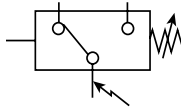




MPS-8



Features

- **Pressure Ranges:**
 Vacuum Pressure 0 to -30 inHg
 Compound -14.7 to 72.5 PSI
- **Sensor Outputs:**
 1 NPN / PNP Open Collector Transistor Output, 30VDC, 125mA
 1 Analog Output, 1 to 5VDC
- **Switch Point 2/3 Trimmer Adjustment**
- **Fixed Hysteresis 2%**
- **10mm Wide**
- **Compatible with MPS-7 Display**
- **CE Marked**
- **Air and Non-Corrosive Gases**

MPS-8 Programming Options

Fixed Outputs	✓
Units of Measure change	
EZY Mode	
Hysteresis Mode	✓
Window Comparator Mode	
Auto Teach Mode	
Auto Surveillance Mode	
Display Refresh Settings	
Output Response Time	
Display Peak / Bottom Difference Value	
Special Display Features	
Lockout Option	
Peak Value at a Touch	
Bottom Value at a Touch	
Zero Reset	
Red / Green LED Display Options	
Peak Surveillance Mode	
Energy Savings Mode	
Scan Mode	
Password Lockout	
Error Output Mode	
Setting of Decimal Point	



MPS-8 Ordering Numbers

Pressure Range	Port Size	Output Circuit	Electrical Connector	Part Number
0 to -30 inHg	M5 Bottom Swivel Male	PNP Sourcing	4 Pin, M8	MPS-V8U-PG
		NPN Sinking		MPS-V8U-NG
		1-5VDC Analog	2m grommet, MPS-7 Connector*	MPS-V8U-AGE
	4mm Tube Stud	PNP Sourcing	4 Pin, M8	MPS-V8T-PG
		NPN Sinking		MPS-V8T-NG
		1-5vVDC Analog	2m grommet, MPS-7 Connector*	MPS-V8T-AGE
-14.7 to 72.5 PSI	M5 Bottom Swivel Male	1-5VDC Analog	2m grommet, MPS-7 Connector*	MPS-R8U-AGE
	4mm Tube Stud	1-5VDC Analog	2m grommet, MPS-7 Connector*	MPS-R8T-AGE

* For 2m Grommet Only Connection, cut off GE connector for lead wires

Specifications

Media	Air and Non-Corrosive Gases
Pressure Port	M5 Female, M5 Male Swivel, 4mm Tube Stud
Proof Pressure	(V) 72.5 PSI, (R) 116 PSI
Operating Temperature	32 to 122°F (0 to 50°C)
Storage Temperature	14 to 140°F (-10 to 60°C)
Humidity	35 to 85% RH
Electrical Connection	(G) Grommet Open Lead; (GE) Clip Type for use with MPS-7 Series
Power Supply	10.8 to 30VDC, Ripple Vp-p 10% Max., Reverse Voltage Protection
Switch Output	1 Output, Normally Open, NPN or PNP Open Collector Transistor, 30VDC, 125mA
Linear Output	Analog Output 1 to 5VDC
Switch Point Setting	2/3 Trimmer
Hysteresis	≤ 2% of F.S. Fixed
Response Time	≤1ms
Repeatability	≤ 0.2% F.S.
Thermal Error	1% over ±25°C (77°C) Temperature Change: Range 32 to 122°F (0 to 50°C)
General Protection	IP40, CE Marked, EMC Rating: EN55011 Class B, EN50082-2
Current Consumption	< 20mA
Spike Protection	Vp-p 400v, 0.5ms Surge Protection
Dielectric Strength	1000VAC, 1min.
Insulation Resistance	> 100M ohms at 500VDC
Vibration Resistance	10 to 55Hz, 1.5mm amplitude, XYZ, 2 hrs.
Shock Resistance	100 G, XYZ
Material	Body: Polycarbonate; Pressure Port: Anodized Aluminum
Mass	0.14 oz. (4g)



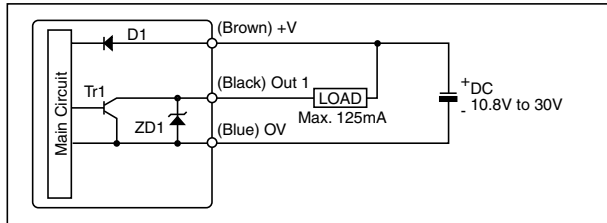
Open Collector Wiring

Grommet Lead Only
 Brown: 24VDC
 Blue: 0VDC
 Black: NPN / PNP Open Collector

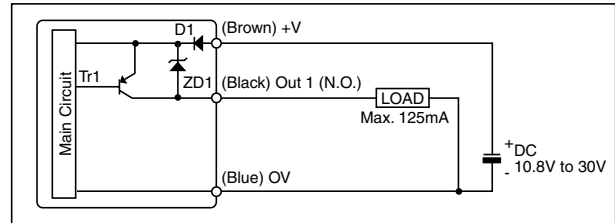
Analog Wiring

Grommet Lead Only
 Brown: 24VDC
 Blue: 0VDC
 Black: Analog 1 to 5VDC

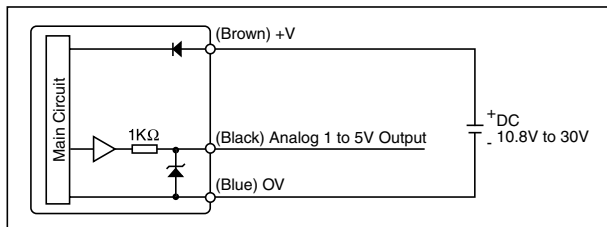
Internal Circuit



NPN Open Collector



PNP Open Collector



Analog

⚠ Cautions

The MPS-8 Pressure Sensor is designed to monitor pressure and is not a safety measure to prevent accidents.

The compatibility of the sensor is the responsibility of the designer of the system and specifications.

Operating Environment

- Parker / Convum Sensors have not been investigated for explosion-proof construction in hazardous environments.
- Do not use with flammable gases, liquids, or in hazardous environments.
- Avoid installing the sensor in locations where excessive voltage surges could damage or affect the performance of the sensor.

Operations

- Dedicate a power supply of 10.8 to 30VDC to the sensor and set the ripple to Vp-p10% or less. Avoid excessive voltage. Avoid voltage surges.
- A small amount of internal voltage drop is possible. Ensure the power supply minus any internal voltage drop exceeds the operating load.
- Verify the operating media is compatible with the specified sensor. Check the chemical make-up, operating temperatures, and maximum pressure ranges of the system before installing.
- Installation of air dryer system is recommended to remove moisture.

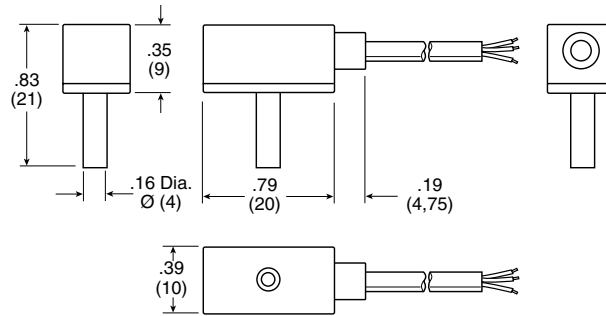
Installation

- Never insert an object into the pressure port other than an appropriate fluid connector.
- Avoid short-circuiting the sensor. Connect the brown lead to V+ and blue lead to 0V.
- Do not connect the output lead wires (black / white) to the power supply.
- Outputs not being used should be trimmed and insulated.
- Install using the metal mounting base.

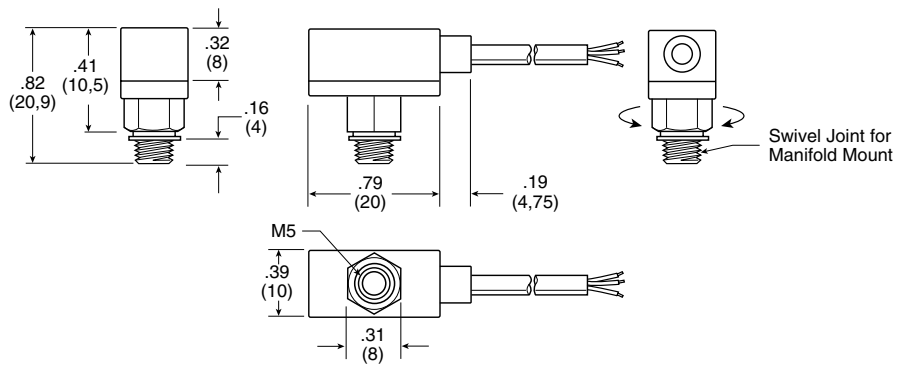


Dimensions

MPS-8T 4mm Tube Stud



MPS-8U M5 Male Swivel, Grommet



2m Grommet MPS-7 Connector

